

COLUMBUS CURRENTS

The Power behind Your Power

As April arrives, it brings with it the showers that produce spring flowers. It also heralds the beginning of a potentially stormy season that can inherently include power outages. While Columbus Electric strives to provide reliable electricity to our members, there are times when Mother Nature has other plans. Most of us can ride out a storm from the comfort and convenience of our homes. However, there is a group of professionals that spring into action when the weather takes a turn for the worst – co-op lineworkers. Braving stormy weather and other challenging conditions, lineworkers often must climb 40 or more feet in the air, carrying heavy equipment to restore power. Listed as one of the 10 most dangerous jobs in the U.S., lineworkers must perform detailed tasks next to high voltage power lines. To help keep them safe, lineworkers wear specialized protective clothing and equipment at all times when on the job. This includes special fire-resistant clothing that will self-extinguish, limiting potential injuries from burns and sparks. Insulated and rubber gloves are worn in tandem to protect them from electrical shock. While the gear performs a critical function, it also adds additional weight and bulk, making the job more complex. In our community CEC lineworkers are responsible for keeping 2,055

miles of lines across Southwestern NM and Southeastern AZ in order to bring power to your home and our local community 24/7, regardless of the weather, holidays or personal considerations.

Being a lineworker is not a glamorous profession. At its essence, it is inherently dangerous, requiring them to work near high voltage lines in the worst of conditions, at any times of the day or night.

During hurricanes, wildfires or storms, crews often work around the clock to restore power. While April is known for spring showers, there is also a day set aside to “thank a lineworker.” Lineworker Appreciation Day is April 18. So during the month of April, if you see a lineworker, please pause to say thank you to the power behind your power. Let them know you appreciate the hard work they do.

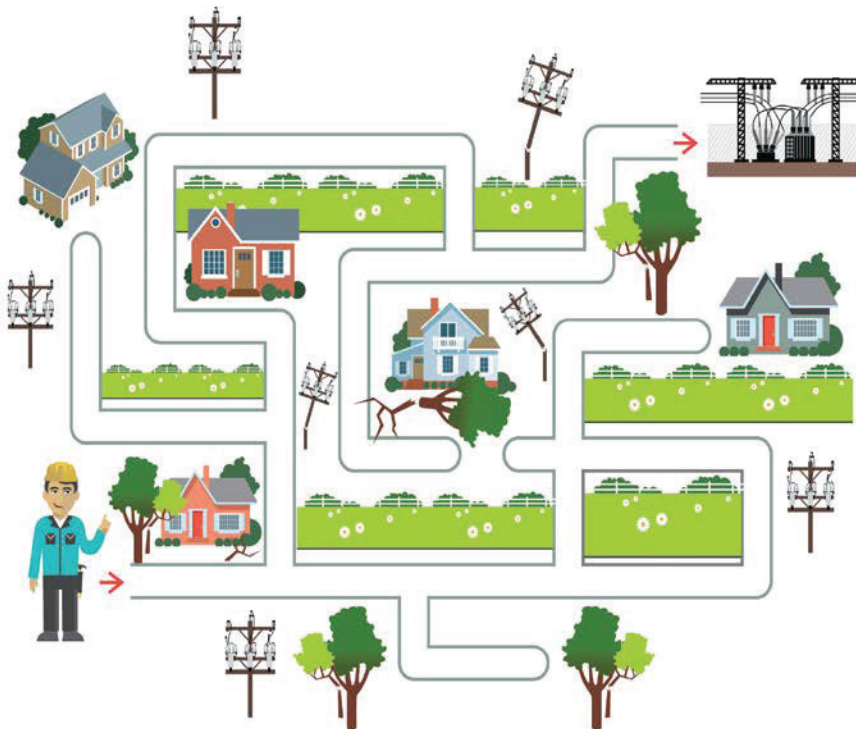


HELP THE LINEWORKER REACH THE SUBSTATION



Lineworkers work in dangerous conditions to restore electricity after major storms and other types of power outages. Many times, lineworkers make substation repairs to get the power back on.

Can you help the lineworker get to the substation?



Energy Efficiency Tip of the Month

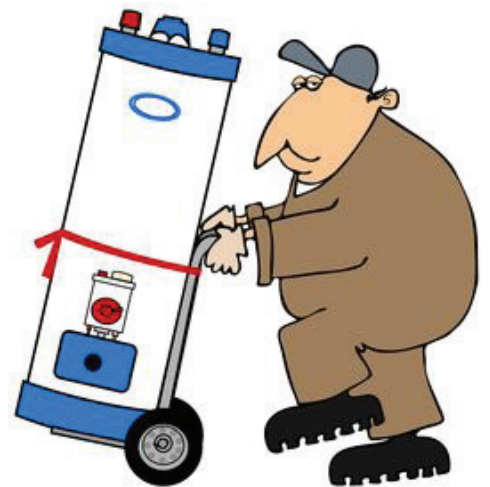
When streaming online content, use the smallest device that makes sense for the number of people watching. Avoid streaming on game consoles, which use 10 times more power than streaming through a tablet or laptop.

Source: energy.gov



Water Heater Program

Columbus Electric offers 40 and 50 gallon electric water heaters to our active members for a nominal fee. For more information call CEC at 1-800-950-2667.



Emergency Response Number
1-800-228-0579

Toll - free Office Number
1-800-950-COOP (2667)

www.columbusco-op.org